

KOMATSU®

PC390LC-8M0

PC
390
LC

HORSEPOWER

Gross: 194 kW 260 HP / 1950 min⁻¹

Net: 187 kW 250 HP / 1950 min⁻¹

OPERATING WEIGHT

38600 – 39900 kg

BUCKET CAPACITY

2.30 – 2.80 m³



Photos may include optional equipment.

WALK-AROUND



**Additional
Working Light
(Optional)**

SE Boom

**Cab Front Full Height Guard
Level 1 (ISO 10262)
(Optional)**

SE Arm

Large Size Undercarriage

Large Capacity Bucket



Large Counterweight

Deck Guard

Full Roller Guard (Optional) and Double-flange Track Roller

PRODUCTIVITY, ECOLOGY & ECONOMY

- Higher Productivity with the Largest Bucket in Class
- Low Fuel Consumption by Total Control of the Engine, Hydraulic and Electronic System
- Low Emission Engine and Low Operation Noise
- Large Drawbar Pull and Digging Force
- Two-mode Setting for Boom

COMFORT & SAFETY

- Large Comfortable Cab
- ROPS Cab (ISO 12117-2)
- Rear View Monitor System (Optional)

* Information and Communication Technology

ICT* & KOMTRAX

- Large Multi-lingual High Resolution Liquid Crystal Display (LCD) Monitor
- Equipment Management Monitoring System
- KOMTRAX

MAINTENANCE & RELIABILITY

- Large Size Undercarriage
- Easy Maintenance
- High Rigidity Work Equipment



		PC390LC-8MO
HORSEPOWER	Gross:	194 kW 260 HP / 1950 min ⁻¹
	Net:	187 kW 250 HP / 1950 min ⁻¹
OPERATING WEIGHT		38600 – 39900 kg
BUCKET CAPACITY		2.30 – 2.80 m ³

PRODUCTIVITY, ECOLOGY & ECONOMY

Higher Productivity with the Largest Bucket in Class

PC390LC-8M0 is equipped with the largest capacity bucket in Komatsu's 30 ton class. Less number of bucket passes is required to fill a dump truck, thus productivity is increased.

Bucket capacity

2.3 m³

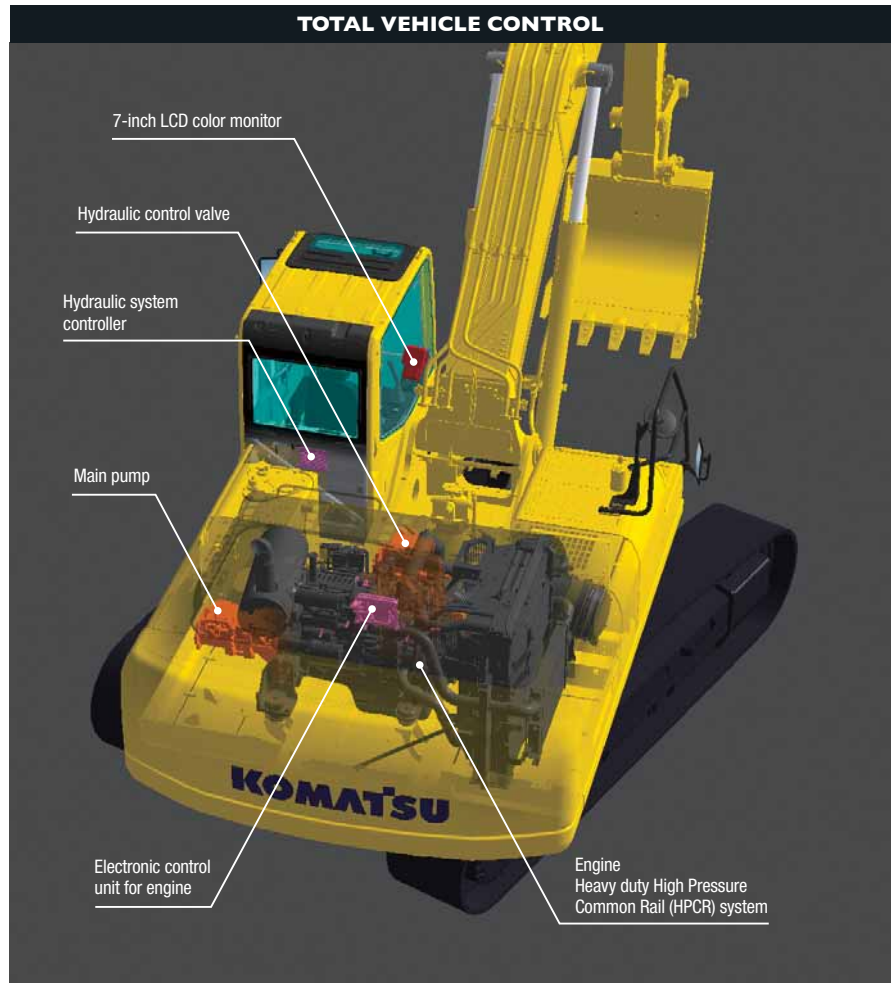
2.6 m arm, material density up to 1.8 t/m³

Low Fuel Consumption

The newly-developed Komatsu SAA6D114E-3 engine enables NOx emissions to be significantly reduced with the accurate multi-staged fuel injection by the engine controller. It improves total engine durability using the high-pressure fuel injection system developed specifically for construction machinery. This excavator significantly reduces hourly fuel consumption using the highly-efficient matching techniques of the engine and hydraulic unit and also provides features that promote energy-saving operations such as the E mode and ECO gauge.

Komatsu Technology

Komatsu develops and produces all major components, such as engines, electronics and hydraulic components, in house. With this "Komatsu Technology" and adding customer feedback, Komatsu is achieving great advancements in technology. To achieve both high levels of productivity and economical performance, Komatsu has developed the main components with a total control system. The result is a new generation of high performance and environment-friendly excavators.



Low Emission Engine

Komatsu SAA6D114E-3 reduced NOx emission by 33% compared with the PC350-7. This engine is U.S. EPA Tier 3 and EU Stage 3A emissions equivalent.



Low Operation Noise

Enables a low noise operation using the low-noise engine and methods to cut noise at source.

Idling Caution

To prevent unnecessary fuel consumption, an idling caution is displayed on the monitor, if the engine idles for 5 minutes or more.



ECO Gauge that Assists Energy-saving Operations

Equipped with the ECO gauge that can be recognized at a glance on the right of the multi-function color monitor for environment-friendly energy-saving operations. Allows focus on operation in the green range with reduced CO₂ emissions and efficient fuel consumption.



ECO gauge

Working Modes Selectable

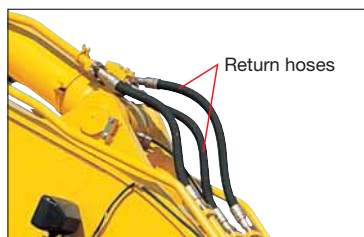
The PC390LC-8M0 excavator is equipped with six working modes (P, E, L, B, ATT/P and ATT/E mode). Each mode is designed to match engine speed and pump output to the application. This provides the flexibility to match equipment performance to the job at hand.



Working Mode	Application	Advantage
P	Power mode	<ul style="list-style-type: none"> Maximum production/power Fast cycle times
E	Economy mode	<ul style="list-style-type: none"> Good cycle times Better fuel economy
L	Lifting mode	<ul style="list-style-type: none"> Suitable attachment speed Lifting capacity is increased 7% by raising hydraulic pressure.
B	Breaker mode	<ul style="list-style-type: none"> Optimum engine rpm, hydraulic flow
ATT/P	Attachment Power mode	<ul style="list-style-type: none"> Optimum engine rpm, hydraulic flow, 2 way Power mode
ATT/E	Attachment Economy mode	<ul style="list-style-type: none"> Optimum engine rpm, hydraulic flow, 2 way Economy mode

Smooth Loading Operation

Two return hoses improve hydraulic performance. In the arm out function, a portion of the oil is returned directly to the tank providing smooth operation.



Large Digging Force

When press the left knob switch which is called the one-touch power max. switch and when it is kept pressed, this function temporarily increases digging force for 8.5 seconds of operation.

Maximum arm crowd force (ISO 6015):
 187 kN (19.1 t) ➔ **200 kN (20.4 t)** **7% UP**
 (With Power Max.)

Maximum bucket digging force (ISO 6015):
 238 kN (24.3 t) ➔ **255 kN (26.0 t)** **7% UP**
 (With Power Max.)

Measured with Power Max. function, 3185 mm arm and ISO 6015 rating.



One-touch power max. switch

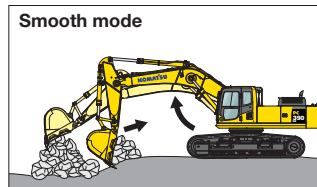
Larger Maximum Drawbar Pull

Larger maximum drawbar pull provides superb steering and slope climbing performance.

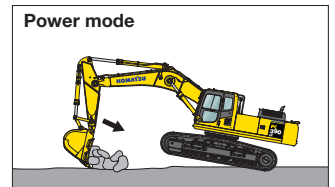
Maximum drawbar pull: 326 kN (33200 kg)

Two-mode Setting for Boom

Smooth mode provides easy operation for gathering blasted rock or scraping down operation. When maximum digging force is needed, switch to Power mode for more effective excavating.



Boom floats upward, reducing lifting of machine front. This facilitates gathering blasted rock and scraping down operations.



Boom pushing force is increased, ditch digging and box digging operation on hard ground are improved.

Variable Track Gauge (Optional)

- Lateral stability is significantly improved when operating with the gauge extended.
- Lateral stability is increased by 30% (Compared with the fixed gauge version).
- With trackframes retracted, overall width complies with many local transportation regulations.



COMFORT

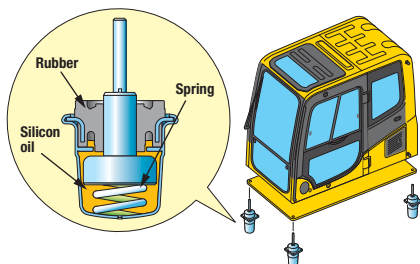


Low Cab Noise

The newly-designed cab is highly rigid and has excellent sound absorption ability. Thorough improvement of noise source reduction and use of low noise engine, hydraulic equipment, and air conditioner allows this machine to generate a low level of noise.

Low Vibration with Cab Damper Mounting

PC390LC-8M0 uses viscous damper mounting for cab that incorporates longer stroke and the addition of a spring. The new cab damper mounting combined with high rigidity deck aids vibration reduction at operator seat.



Wide Newly-designed Cab

Newly-designed wide spacious cab includes seat with reclining backrest. The seat height and longitudinal inclination are easily adjusted using a pull-up lever. You can set the appropriate operational posture of armrest together with the console. Reclining the seat further enables you to place it into the fully flat state with the headrest attached.

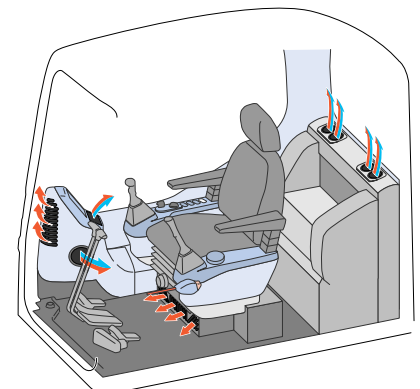


Pressurized Cab

Optional air conditioner (A/C), air filter and a higher internal air pressure minimize external dust from entering the cab.

Automatic Air Conditioner (A/C)

Enables you to easily and precisely set cab atmosphere with the instruments on the large LCD. The bi-level control function keeps the operator's head and feet cool and warm respectively. This improved air flow function keeps the inside of the cab comfortable throughout the year. Defroster function keeps front glass clear.

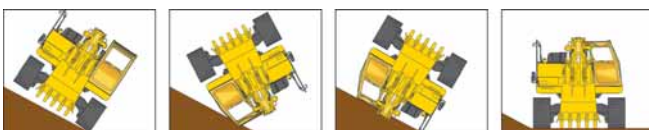
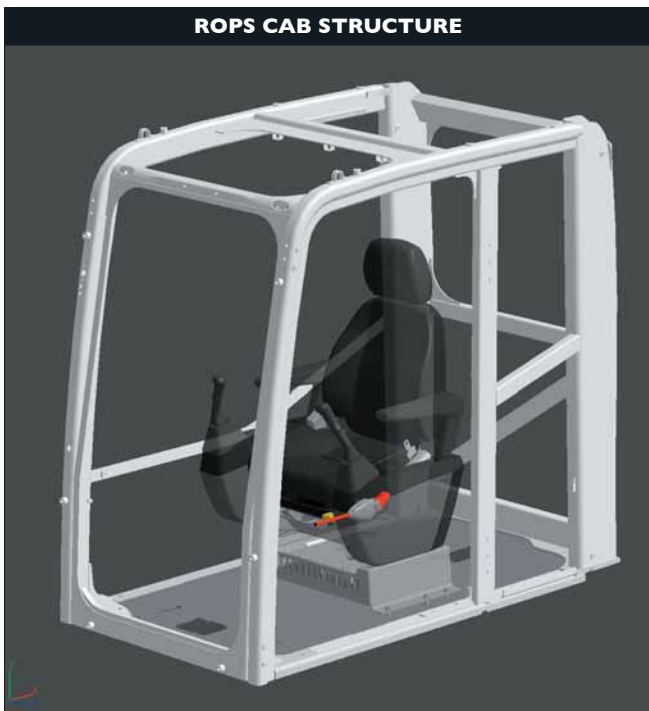


SAFETY

ROPS Cab

The machine is equipped with a ROPS cab that conforms to ISO 12117-2 for excavators as standard equipment. The ROPS cab has high shock-absorption performance, featuring excellent durability and impact strength. It also satisfies the requirements of OPG top guard level 1 (ISO 10262) for falling objects. Combined with the retractable seat belt, The ROPS cab protects the operator in case of tipping over and against falling objects.

ROPS CAB STRUCTURE



Slip-resistant Plates

Highly durable slip-resistant plates maintain superior traction performance for the long term.



Large Serrated Steps



Lock Lever

Locks the hydraulic pressure to prevent unintentional movement. Neutral start function allows machine to be started only in lock position.



Large Side-view, Rear and Sidewise Mirrors

Enlarged left-side mirror and addition of rear and side mirror allow the PC390LC-8M0 to meet the visibility requirements (ISO 5006).



Rear View Monitor System (Optional)

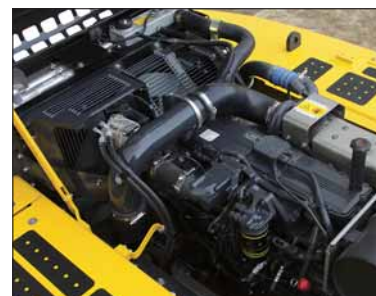
The operator can view the rear of the machine with a color monitor screen.



Rear view image on monitor

Thermal and Fan Guards

Thermal and fan guards are placed around high-temperature parts of the engine and fan drive.



Pump/Engine Room Partition

Pump/engine room partition prevents oil from spraying onto the engine if a hydraulic hose should burst.



Large Multi-lingual High Resolution LCD Monitor

A large user-friendly high resolution LCD color monitor enables safe, accurate and smooth work. Visibility and resolution are further improved compared with current 7-inch large LCD. Simple and easy to operate switches. Function keys facilitate multi-function operations. Displays data in 13 languages to globally support operators around the world.

Indicators

- | | |
|----------------------------------|-----------------------------------|
| 1 Auto-decelerator | 5 Hydraulic oil temperature gauge |
| 2 Working mode | 6 Fuel gauge |
| 3 Travel speed | 7 ECO gauge |
| 4 Engine water temperature gauge | 8 Fuel consumption gauge |
| | 9 Function switches menu |

Basic operation switches

- | | |
|-------------------------|---------------------|
| 1 Auto-decelerator | 4 Buzzer cancel |
| 2 Working mode selector | 5 Wiper |
| 3 Traveling selector | 6 Windshield washer |

Supports Efficiency Improvement

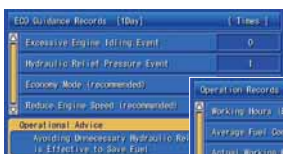
The main screen displays advices for promoting energy-saving operations as needed. The operator can use the ECO guidance menu to check the operation records, ECO guidance records, average fuel consumption logs, etc.



ECO guidance



ECO guidance menu



ECO guidance records



Operation records



Average fuel consumption logs

Equipment Management Monitoring System

Monitor function

Controller monitors engine oil level, coolant temperature, battery charge air clogging, etc. If the controller finds any abnormality, it is displayed on the LCD.



Maintenance function

The monitor informs replacement time of oil and filters on the LCD when the replacement interval is reached.



Trouble data memory function

Monitor stores abnormalities for effective troubleshooting.



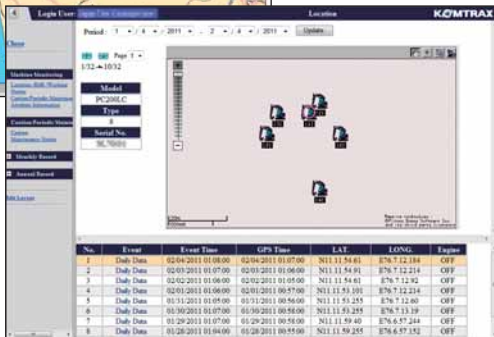
Assists Customer's Equipment Management and Contributes to Fuel Cost Cutting

Equipment Management Support

KOMTRAX terminal installed on your machine collects and sends information such as machine location, working record, machine conditions, etc. using wireless communication. You can review the KOMTRAX data remotely via the online application. KOMTRAX not only gives you the informations on your machine, but also the convenience of managing your fleet on the Web.



Location



Movement generated position



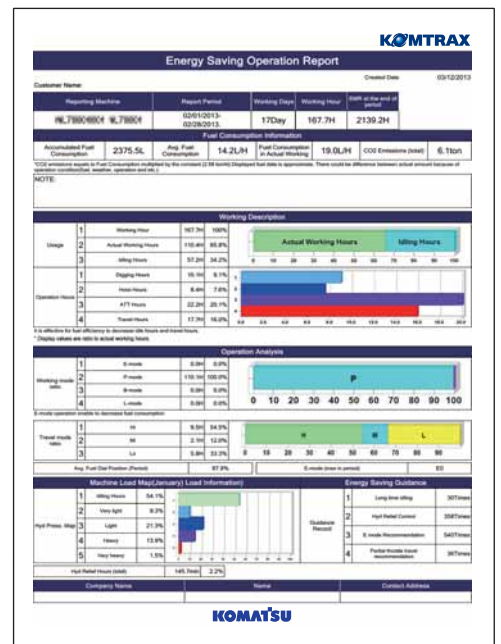
Operation map



Monthly status summary

Energy-saving Operation Support Report

KOMTRAX can provide various useful information which includes the energy-saving operation support report created based on the operating information of your machine such as fuel consumption and idle time.



Image

MAINTENANCE

Side-by-side Cooling

Since radiator and oil cooler are arranged in parallel, it is easy to clean, remove and install them.



Equipped with the Drain Valve as Standard

Prevents clothes and the ground from becoming contaminated due to oil leakage when replacing the engine oil.



Easy Access to Engine Oil Filter and Fuel Drain Valve

Engine oil level gauge, and fuel filter are one side mounted to improve accessibility. Engine oil filter and fuel drain valve are remotely mounted to improve accessibility.



Engine oil filter



Fuel drain valve

Long Work Equipment Greasing Interval (Optional)

High quality bushings and resin shims are optionally available for work equipment pins excluding bucket, extending greasing interval to 500 hours.

Long-life Oil, Filter

Uses high-performance filtering materials and long-life oil. Extends the oil and filter replacement interval.

Engine oil &	
Engine oil filter	every 500 hours
Hydraulic oil	every 5000 hours
Hydraulic oil filter	every 1000 hours

High-capacity Air Cleaner

High capacity air cleaner is comparable to that of larger machines. The larger air cleaner can extend air cleaner life during long-term operation and prevents early clogging and resulting power decrease. Reliability is improved by a new seal design.



Large Fuel Tank Capacity

Large fuel tank capacity extends operating hours before refueling. Fuel tank is treated for rust prevention.



RELIABILITY

Larger Undercarriage

PC390LC-8M0 employs undercarriage of PC450LC-8 one size larger with longer service life.



large size undercarriage



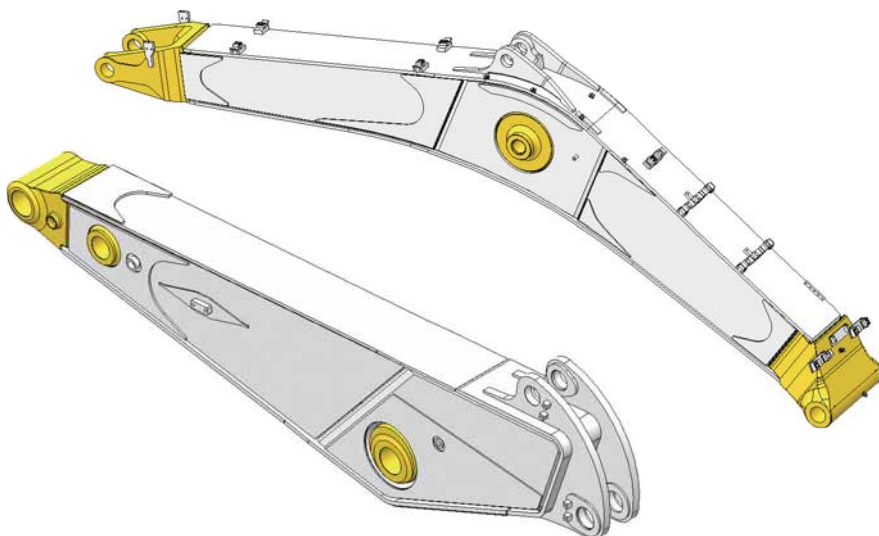
Full roller guard (Optional)



Strengthened revolving frame undercover

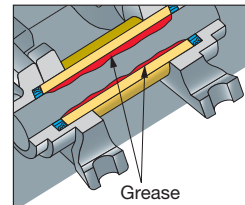
High Rigidity Work Equipment

Boom and arms are constructed of thick plates of high tensile strength steel. In addition, these structures are designed with large cross-sectional areas and generous use of castings. The result is working attachments that exhibit long term durability and high resistance to bending and torsional stress.



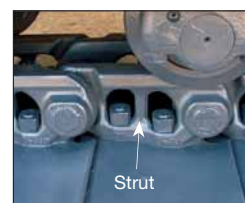
Grease Sealed Track

PC390LC-8M0 uses grease sealed tracks for extended undercarriage life.



Larger Track Link with Strut

PC390LC-8M0 uses track links with strut, providing superb durability.



Sturdy Frame Structure

The revolving frame, center frame and undercarriage are designed by using the most advanced three-dimensional CAD and Finite Element Method (FEM) analysis technology.

Highly Reliable Electronic Devices

Exclusively designed electronic devices have passed severe testing.

- Controller
- Sensors
- Connectors
- Heat resistant wiring

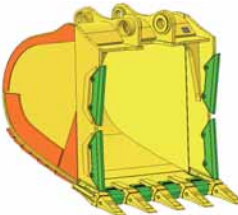
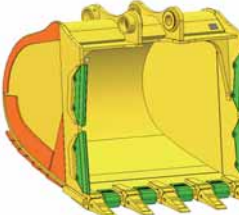
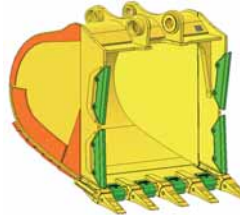
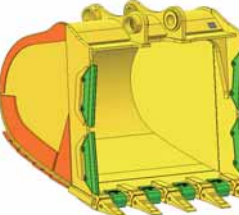
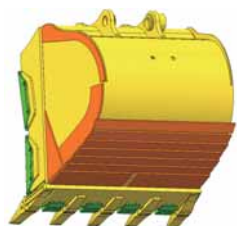
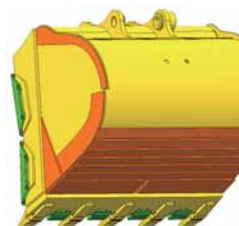
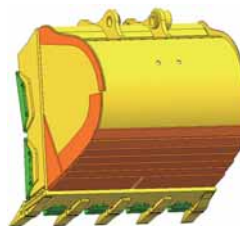
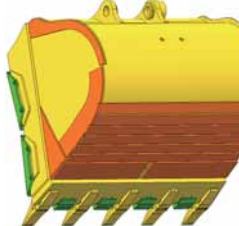
Reliable Components

All of the major machine components, such as engine, hydraulic pumps, hydraulic motors and control valves are exclusively designed and manufactured by Komatsu.

BUCKET SELECTION

Larger Bucket Selection

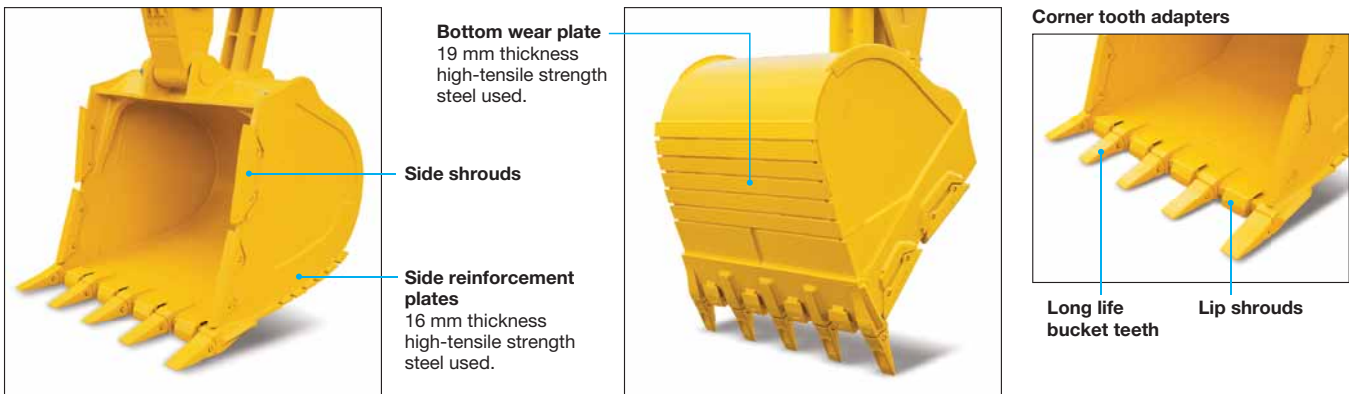
Bucket Line-up

	SE 6.0 m Boom			
	2.6 m Arm		2.2 m Arm	
Capacity	2.30 m ³	2.70 m ³	2.50 m ³	2.80 m ³
Width*	1560 mm	1805 mm	1685 mm	1865 mm
Material Density	◎	○	◎	○
Tooth Type	Horizontal	Horizontal	Horizontal / KMAX	Horizontal
Shape				
				

* With side shroud & tooth ◎: Material density up to 1.8 t/m³ ○: Material density up to 1.5 t/m³

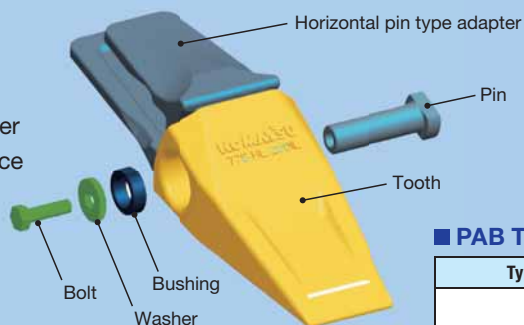
Quarry Bucket and Work Equipment

PC390LC-8M0 bucket is designed exclusively for quarry use and is higher strength for wear. Various parts of work equipment are also strengthened.



Feature of [PAB Tooth] (Pin And Bushing system Tooth)

- Able to fit on the bucket with horizontal pin type adapter
 - Easy change-out only with a ratchet wrench
 - Longer tooth life by easy rotation and turnover
 - Durable and reusable PAB pin with flat surface
- Limited to where horizontal pin type tooth is mainly used.



PAB Tooth Line-up

Type	Style
Integrated Long Life IL	
Heavy Standard HS	
Heavy Rock HR	



Set PAB tooth to horizontal pin type adapter



Insert exclusive pin to the adapter pin hole



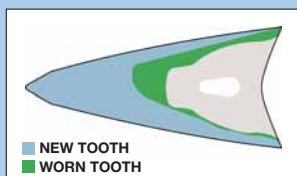
Set bushing, washer and bolt and tighten by a ratchet wrench

Feature of KMAX Tooth System

- Better penetration and cycle times
- Unique reusable fastener
- Hardness throughout the tooth
- Less "throw away" waste
- Unique high strength design
- Fast tooth changeover



Tooth



The KMAX RC style tooth shown here offers a consumption ratio of 60%.

Fastener

Simple, reusable fastener system saves time and money by unlocking with a simple 90-degree turn.



To lock, use the correct size socket, rotate the pin locking shaft 90-degree clock wise to finish the installation.



When removing the fastener, use the correct size socket to rotate the pin-locking shaft 90-degree counter-clockwise.

KMAX Tooth Line-up

Feature	Style
F Flare: Loose material for clean bottom and greater fill	
SYL Standard: General applications	
SD Chisel: General purpose tooth Designed for penetration	
RC Rock Chisel: Designed for penetration and long wear life	
T Tiger: Designed for good penetration with ribs for strength	
TV Tiger: Offers best penetration in tight material	
UT Twin Tiger: Offers longer life penetration for corners	
WT Twin Tiger: Designed for penetration for corners	

Some application may not have been available in your country or region. If you are interested in such application, please contact a KOMATSU office near you.

ATTACHMENT

Komatsu Genuine Attachment Tool

Komatsu-recommended attachment tools for hydraulic excavators
A wide range of attachment tools are provided to suit customers' specific applications.

Hydraulic breaker

The hydraulic breaker is an attachment tool used for crushing rock beds and paved surfaces, demolishing concrete structures, etc. The large gas chamber, ideal gas pressure ratio, and long-stroke piston deliver a powerful impact force. Since the breaker unit does not require an accumulator, the number of parts has been reduced, resulting in lower maintenance costs.



OPTIONS

- Cab front full height guard level 1 (ISO 10262)



- Cab front full height guard level 2 (ISO 10262)



- Additional front lights
- Rain visor



- Air pre-cleaner



- OPG top guard level 2 (ISO 10262)



- Strengthened track frame undercover



- Sun visor



- Seat, suspension



- Additional piping

- Fixed skylight and sunshade



- Fixed one-piece laminated front window glass

The front window is fixed and uses laminated safety glass to prevent scattering of glass fragments when broken.



- Full roller guard

KOMATSU TOTAL SUPPORT



Komatsu Total Support

To keep your machine available and minimize operation cost when you need it, Komatsu Distributor is ready to provide variety of support before and after procuring the machine.

Fleet recommendation

Komatsu Distributor can study customer job site and provide the most optimum fleet recommendation with detailed information to meet all of your application needs when you are considering to buy new machines or to replace the existing ones from Komatsu.



Product support

Komatsu Distributor secure the certain quality of machine will be delivered.

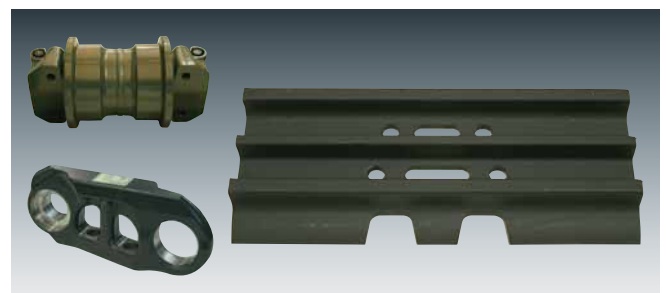
Parts availability

Komatsu Distributor is available for emergency inquiry by the customers for genuine, quality guaranteed Komatsu parts.

Technical support

Komatsu product support service (Technical support) are designed to help customer. Komatsu Distributor offers a variety of effective services how much Komatsu is dedicated to the maintenance and support of Komatsu machine.

- Preventive Maintenance (PM) clinic
- Oil & Wear analysis program
- Undercarriage inspection service, etc.



Repair & maintenance service

Komatsu Distributor offers quality repair service, periodical maintenance, and maintenance service to the customer, utilizing and promoting Komatsu developed programs.

Komatsu Reman (Remanufactured) components

Komatsu Reman products are the result of the implementation of the Komatsu global Reman policy which establishes and agrees to reduce the owning, operating and total Life Cycle Costs (LCC) to Komatsu's customer through prompt delivery, high quality and competitively priced in own remanufactured products (QDC).



SPECIFICATIONS



ENGINE

Model Komatsu SAA6D114E-3
 Type Water-cooled, 4-cycle, direct injection
 Aspiration Turbocharged, aftercooled
 Number of cylinders 6
 Bore 114 mm
 Stroke 135 mm
 Piston displacement 8.27 L
 Horsepower:
 SAE J1995 Gross 194 kW 260 HP
 ISO 9249 / SAE J1349 Net 187 kW 250 HP
 Rated rpm 1950 min⁻¹
 Fan drive method for radiator cooling Mechanical
 Governor All-speed control, electronic

U.S. EPA Tier 3 and EU Stage 3A emissions equivalent.



HYDRAULICS

Type .. HydrauMind (Hydraulic Mechanical Intelligence New Design) system, closed-center system with load sensing valves and pressure compensated valves
 Number of selectable working modes 6
 Main pump:
 Type Variable displacement piston type
 Pumps for Boom, arm, bucket, swing, and travel circuits
 Maximum flow 535 L/min
 Supply for control circuit Self-reducing valve
 Hydraulic motors:
 Travel 2 x axial piston motor with parking brake
 Swing 1 x axial piston motor with swing holding brake
 Relief valve setting:
 Implement circuits 37.3 MPa 380 kg/cm²
 Travel circuit 37.3 MPa 380 kg/cm²
 Swing circuit 27.9 MPa 285 kg/cm²
 Pilot circuit 3.2 MPa 33 kg/cm²
 Hydraulic cylinders:
 (Number of cylinders – bore x stroke x rod diameter)
 Boom 2–140 mm x 1480 mm x 100 mm
 Arm 1–160 mm x 1825 mm x 110 mm
 Bucket 1–150 mm x 1285 mm x 110 mm



DRIVES AND BRAKES

Steering control Two levers with pedals
 Drive method Hydrostatic
 Maximum drawbar pull 264 kN 26900 kg
 Gradeability 70%, 35°
 Maximum travel speed: High 5.5 km/h
 (Auto-shift) Mid 4.5 km/h
 (Auto-shift) Low 3.2 km/h
 Service brake Hydraulic lock
 Parking brake Mechanical disc brake



SWING SYSTEM

Drive method Hydrostatic
 Swing reduction Planetary gear
 Swing circle lubrication Grease-bathed
 Service brake Hydraulic lock
 Holding brake/swing lock Mechanical disc brake
 Swing speed 9.5 min⁻¹



UNDERCARRIAGE

Center frame X-frame
 Track frame Box-section
 Seal of track Sealed track
 Track adjuster Hydraulic
 Number of shoes (Each side) 49
 Number of carrier rollers (Each side) 2
 Number of track rollers (Each side) 8



COOLANT AND LUBRICANT CAPACITY (REFILLING)

Fuel tank 605 L
 Coolant 31.0 L
 Engine 37.0 L
 Final drive (Each side) 9.0 L
 Swing drive 16.5 L
 Hydraulic tank 188 L



OPERATING WEIGHT (APPROXIMATE)

Operating weight including 6000 mm one-piece boom, 2550 mm arm, ISO 7451 heaped 2.30 m³ backhoe bucket, rated capacity of lubricants, coolant, full fuel tank, operator, fixed gauge, and standard equipment.

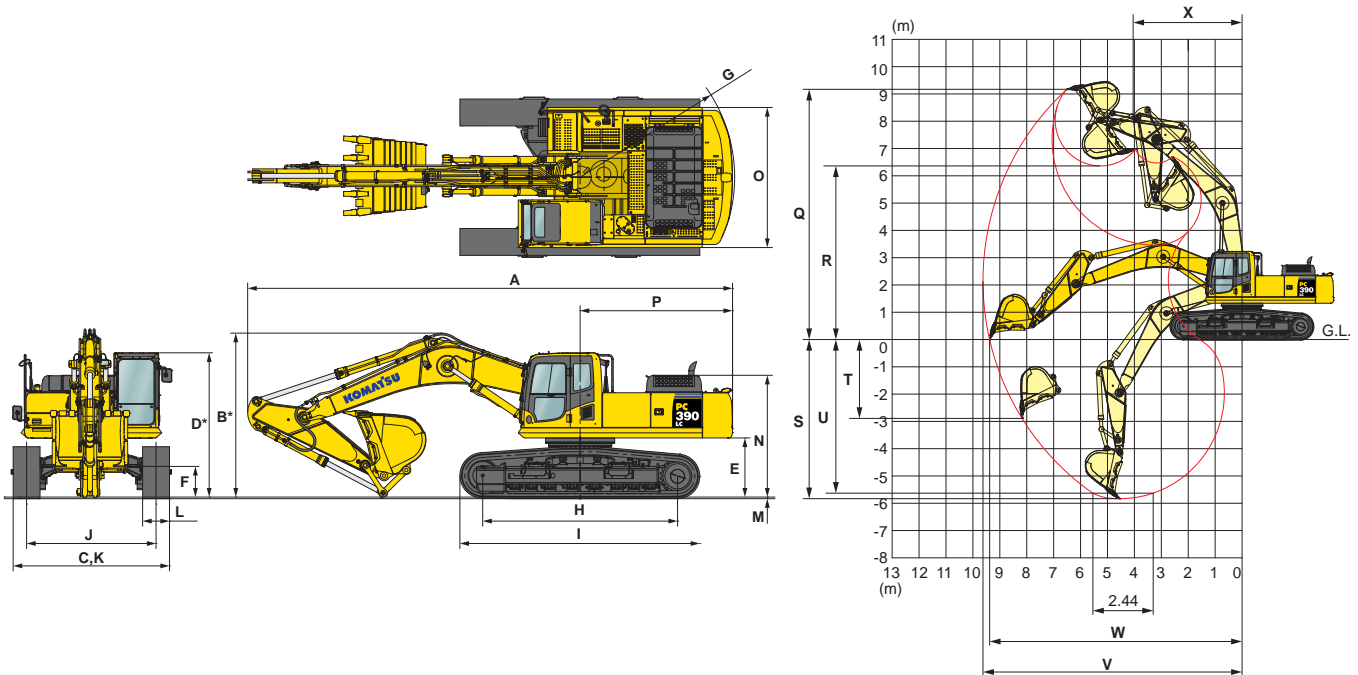
Shoes	PC390LC-8M0	
	Operating Weight	Ground Pressure
600 mm	38600 kg	66.5 kPa 0.68 kg/cm ²
700 mm	39000 kg	57.6 kPa 0.59 kg/cm ²



DIMENSIONS & WORKING RANGE

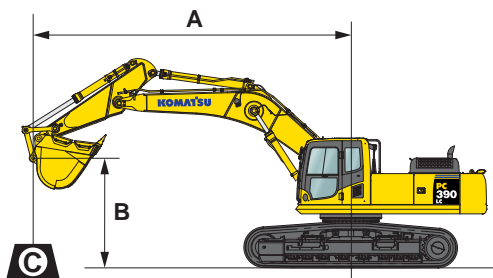
Model		PC390LC-8MO	
Boom Length		6000 mm	
Arm Length		2550 mm	2200 mm
A	Overall length	10680 mm	10825 mm
B	Overall height (To top of boom)*	3500 mm	3660 mm
C	Overall width	3340 mm	3340 mm
D	Overall height (To top of cab)*	3220 mm	3220 mm
E	Ground clearance, counterweight	1320 mm	1320 mm
F	Ground clearance (Minimum)	555 mm	555 mm
G	Tail swing radius	3450 mm	3450 mm
H	Track length on ground	4350 mm	4350 mm
I	Track length	5385 mm	5385 mm
J	Track gauge	2740 mm	2740 mm
K	Width of crawler	3340 mm	3340 mm
L	Shoe width	600 mm	600 mm
M	Grouser height	37 mm	37 mm
N	Machine cab height	2720 mm	2720 mm
O	Machine cab width	3145 mm	3145 mm
P	Distance, swing center to rear end	3405 mm	3405 mm
Q	Max. digging height	9700 mm	9130 mm
R	Max. dumping height	6770 mm	6335 mm
S	Max. digging depth	6055 mm	5820 mm
T	Max. vertical wall digging depth	3945 mm	2885 mm
U	Max. digging depth of cut for 2440 mm level	5870 mm	5630 mm
V	Max. digging reach	10070 mm	9620 mm
W	Max. digging reach at ground level	9825 mm	9380 mm
X	Min. swing radius	4035 mm	4080 mm
ISO 6015 Rating	Bucket digging force at power max.	255 kN 26000 kg	255 kN 26000 kg
	Arm crowd force at power max.	200 kN 20400 kg	252 kN 25700 kg

* Including grouser height





LIFTING CAPACITY WITH LIFTING MODE

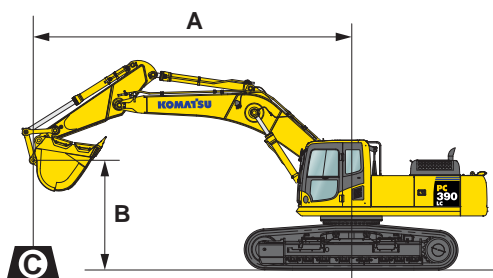


PC390LC-8M0

- A: Reach from swing center
- B: Bucket hook height
- C: Lifting capacity
- Cf: Rating over front
- Cs: Rating over side
- ⊗: Rating at maximum reach

PC390LC-8M0		Boom: 6000 mm		Arm: 2550 mm		Me Bucket: 2.30 m ³ ISO 7451 heaped		Shoe: 600 mm triple grouser					
B	A	⊗ MAX		8.0 m		7.5 m		6.0 m		4.5 m		3.0 m	
		Cf	Cs	Cf	Cs	Cf	Cs	Cf	Cs	Cf	Cs	Cf	Cs
7.5 m		*6110 kg	*6110 kg										
6.0 m		*5990 kg	*5990 kg										
4.5 m		*6190 kg	5370 kg	*6870 kg	6210 kg	*7390 kg	7030 kg	*8880 kg	*8880 kg	*11540 kg	*11540 kg		
3.0 m		*6690 kg	4880 kg	*7280 kg	6030 kg	*7740 kg	6790 kg	*9790 kg	9790 kg	*13940 kg	*13940 kg		
1.5 m		*6820 kg	4730 kg	*7420 kg	5860 kg	*8040 kg	6560 kg	*10520 kg	9530 kg	*15120 kg	15120 kg		
0 m		*6910 kg	4900 kg	*7360 kg	5710 kg	*8070 kg	6410 kg	*10740 kg	9240 kg	*15110 kg	14800 kg	*9090 kg	*9090 kg
-1.5 m		*6940 kg	5490 kg			*7490 kg	6300 kg	*10230 kg	9170 kg	*14010 kg	13900 kg	*16070 kg	*16070 kg
-3.0 m		*6710 kg	*6710 kg					*8630 kg	8550 kg	*11770 kg	*11770 kg	*14990 kg	*14990 kg
-4.5 m		*5560 kg	*5560 kg							*7710 kg	*7710 kg		

* Load is limited by hydraulic capacity rather than tipping. Ratings are based on SAE J1097. Rated loads do not exceed 87% of hydraulic lift capacity or 75% of tipping load.



PC390LC-8M0

- A: Reach from swing center
- B: Bucket hook height
- C: Lifting capacity
- Cf: Rating over front
- Cs: Rating over side
- ⊗: Rating at maximum reach

PC390LC-8M0		Boom: 6000 mm		Arm: 2200 mm		Bucket: 2.50 m ³ ISO 7451 heaped		Shoe: 600 mm triple grouser					
B	A	⊗ MAX		8.0 m		7.5 m		6.0 m		4.5 m		3.0 m	
		Cf	Cs	Cf	Cs	Cf	Cs	Cf	Cs	Cf	Cs	Cf	Cs
7.5 m		*7810 kg	*7810 kg										
6.0 m		*7370 kg	7370 kg					*8070 kg	*8070 kg				
4.5 m		*7240 kg	6020 kg			*7390 kg	7030 kg	*8880 kg	*8880 kg	*11540 kg	*11540 kg		
3.0 m		*7270 kg	5410 kg	*7280 kg	6030 kg	*7740 kg	6790 kg	*9790 kg	9790 kg	*13940 kg	*13940 kg		
1.5 m		*7370 kg	5220 kg	*7420 kg	5860 kg	*8040 kg	6550 kg	*10520 kg	9530 kg	*15120 kg	15120 kg		
0 m		*7500 kg	5440 kg			*8070 kg	6410 kg	*10740 kg	9240 kg	*15110 kg	14800 kg		
-1.5 m		*7550 kg	6190 kg					*10230 kg	9170 kg	*14010 kg	*13900 kg	*16070 kg	*16070 kg
-3.0 m		*7260 kg	*7260 kg					*8630 kg	*8550 kg	*11770 kg	*11770 kg	*14990 kg	*14990 kg
-4.5 m										*7710 kg	*7710 kg		

* Load is limited by hydraulic capacity rather than tipping. Ratings are based on SAE J1097. Rated loads do not exceed 87% of hydraulic lift capacity or 75% of tipping load.



STANDARD EQUIPMENT

ENGINE:

- Automatic engine warm-up system
- Dry type air cleaner, double element
- Engine, Komatsu SAA6D114E-3
- Engine overheat prevention system
- Radiator and oil cooler dust proof net
- Suction fan

ELECTRICAL SYSTEM:

- Alternator, 24 V/60 A
- Auto-decelerator
- Batteries, 2 X 12 V/126 Ah
- Starting motor, 24 V/7.5 kW
- Working light, 2 (Boom and RH)

HYDRAULIC SYSTEM:

- Boom holding valve
- Power maximizing system
- Pressure Proportional Control (PPC) hydraulic control system
- Two-mode setting for boom
- Working mode selection system

GUARDS AND COVERS:

- Fan guard structure

UNDERCARRIAGE:

- Hydraulic track adjusters (Each side)
- Track roller
 - 8 each side
- Track shoe
 - 600 mm triple grouser

OPERATOR ENVIRONMENT:

- A/C with defroster
- Cab with 2-piece pull up front window
- Multi-function color monitor
- Rear view mirror, RH, LH, rear, sidewise
- ROPS cab (ISO 12117-2)
- Seat belt, retractable
- Skylight

OTHER EQUIPMENT:

- Counterweight
- Electric horn
- Rear reflector
- Slip-resistant plates
- Travel alarm



OPTIONAL EQUIPMENT

ENGINE:

- Additional filter system for poor-quality fuel (Water separator)
- Large capacity fuel pre-filter

ELECTRICAL SYSTEM:

- Batteries, 2 X 12 V/140 Ah
- Working lights (2 on cab)

HYDRAULIC SYSTEM:

- Service valve

UNDERCARRIAGE:

- Full roller guard
- Shoes, triple grouser shoes
 - 700 mm
- Track frame undercover
- Variable track gauge

OPERATOR ENVIRONMENT:

- Bolt-on top guard, OPG top guard level 2 (ISO 10262)
- Cab accessories
 - Rain visor
 - Sun visor
- Cab front guard
 - Full height guard, OPG level 1 (ISO 10262)
 - Full height guard, OPG level 2 (ISO 10262)
 - Half height guard
- Cab with fixed front window
- Fixed skylight and sunshade
- Rear view monitor system
- Seat, suspension

WORK EQUIPMENT:

- Arms
 - 2200 mm arm assembly
 - 2550 mm arm assembly
- Boom
 - 6000 mm

OTHER EQUIPMENT:

- Electric grease gun
- Fuel refill pump