

Technical sheet

MLT-X 735 T LSU

Telehandlers



Capacities	Metric	Imperial
Max. capacity	3500 kg	7716 lbs
Max. lifting height	6.90 m	22 ft 7 in
Max. outreach	3.90 m	12 ft 9 in
Reach at max. height	1 m	3 ft 3 in
Weight and dimensions		
Unladen weight (with forks)	7075 kg	15543 lbs
m4 - Ground clearance	0.44 m	17 in
l2 - Overall length to carriage	4.79 m	15 ft 8 in
y - Wheelbase	2.81 m	9 ft 2 in
b4 - Overall width of cab	0.98 m	3 ft 2 in
b1 - Overall width	2.40 m	7 ft 10 in
h17 - Overall height	2.30 m	7 ft 6 in
a4 - Crowd angle	13 °	13 °
a5 - Dump angle	134 °	134 °
Wa1 - External turning radius (over tyres)	3.92 m	12 ft 1 in
Standard tyres	460/70 R24 159A8 A580 - Alliance	460/70 R24 159A8 A580 - Alliance
Performances		
Lifting	7.30 s	7.30 s
Lowering	5.60 s	5.60 s
Extension	8.20 s	8.20 s
Retraction	6.60 s	6.60 s
Crowd	3.20 s	3.20 s
Dump	2.70 s	2.70 s
Engine		
Brand	Perkins	Perkins
Environmental norm	Stage 3A	Stage 3A
Model	1104D-44 TA	1104D-44 TA
Number of cylinders - Cubic capacity	4 - 4400 cm ³	4 - 269 in ³
Power	101 hp / 74.50 kW	101 hp / 74.50 kW
Max. torque	410 Nm at 1400 rpm	302 ft.lbs at 1400 rpm
Cooling system	by Water	by Water
Transmission		
Type	Torque Converter	Torque Converter
Number of gears (forward/reverse)	4/4	4/4
Max. travel speed (may vary according to applicable regulations)	33 km/h	20.50 mph
Differential lock	Limited slip differential on front axle	Limited slip differential on front axle
Parking brake	Manual parking brake	Manual parking brake
Service brake	Hydraulic oil immersed multi-disc braking on front & rear axles	Hydraulic oil immersed multi-disc braking on front & rear axles
Hydraulics		
Hydraulic pump type	Load sensing pump	Load sensing pump
Hydraulic flow - Pressure	108 l/min - 270 bar	26.53 gpm - 3916 psi
Flow sharing distributor	Standard	Standard
Tank capacities		
Hydraulic oil	135 l	36 US gal.
Fuel	120 l	32 US gal.
Noise & vibration		
Noise at driving position (LpA) tested following NF EN 12053 norm	76 dB	76 dB
Environmental noise LwA	106 dB	106 dB
Vibration to whole hand / arm	<2.5 m/s ²	<8.2 ft/s ²

Miscellaneous

Safety

Cab ROPS - FOPS Level 1

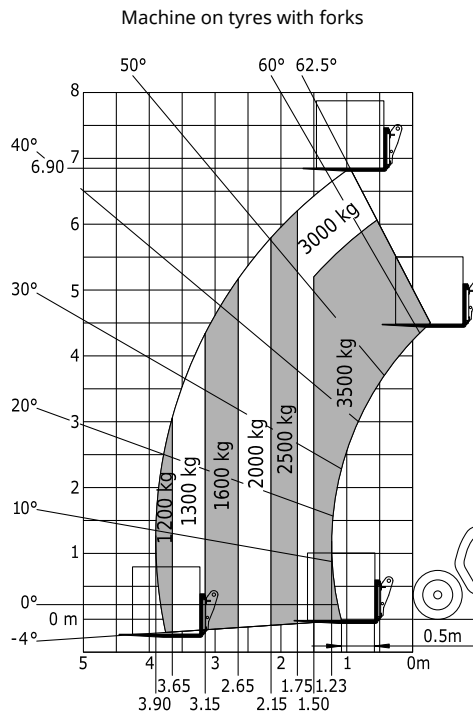
Cab ROPS - FOPS Level 1

Options / Finishing

S : Standard / O : Optional / - : Not available

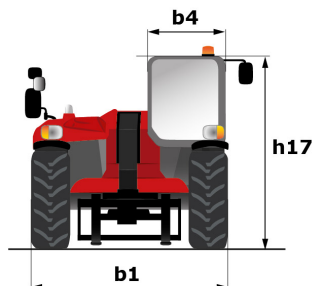
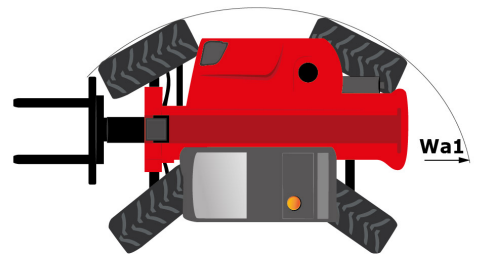
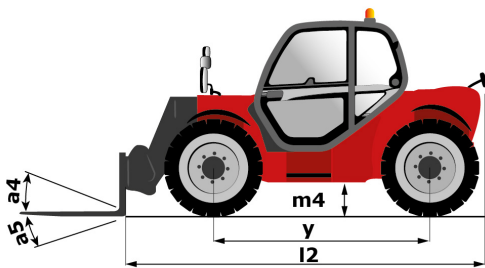
	Classic	Premium	Elite
General			
Cyclonic air pre-filter	S	S	O
Self cleaning air prefilter	O	O	S
Auto reversing fan	S	S	S
Manual rotating towing hitch on counterweight	S	S	S
Automatic rotating towing hitch on counterweight	O	O	O
Comfort			
Tuner car radio (50 W)	S	-	-
CD MP3 car radio	O	S	-
Bluetooth CD MP3 radio	O	O	S
Mechanical cloth seat	S	-	-
Air suspension cloth seat	O	S	-
Low frequency air suspension cloth seat with heating	O	O	S
Manual air conditioning	O	S	S
Hydraulic			
Hydraulic flow control system	O	O	O
Continuous flow hydraulics	O	O	O
Easy Connect System (ECS)	O	S	S
Boom suspension "CRC"	O	O	S
Attachment hydraulic locking	O	O	O
Electrovalve for 2 hydraulic functions (on boom head)	O	O	O
Return pipe to hydraulic oil tank	O	O	O
1 pair of pre-fitted Double Action rear hydraulic couplers	O	O	O
Electricity / Safety			
Audio warning on reverse movements	O	O	O
Front and rear LED work lights (x4 : 2 front + 2 rear)	O	O	O
Work lights on boom head	O	O	O
Electric predisposition on boom	O	O	O

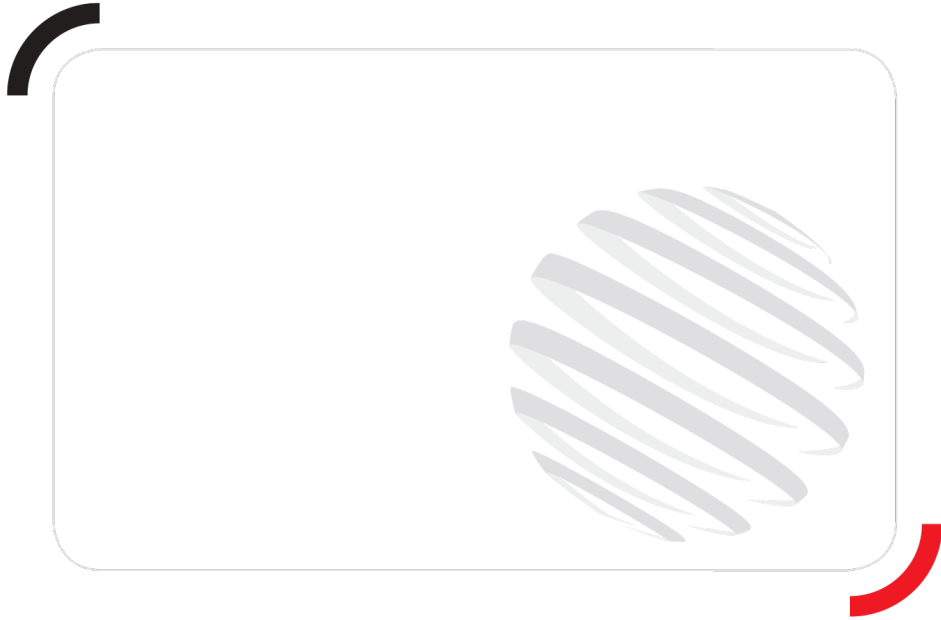
Load chart



Rough terrain load chart (EN 1459 B)

Dimensional drawing





Siège Social
430 rue de l'Aubinière - 44150 Ancenis Cedex - France
Tel: +33(0)2 40 09 10 11 - Fax: +33 (0)2 40 09 10 97
www.manitou.com



This brochure describes versions and configuration options for Manitou products which may be fitted with different equipment. The equipment described in this brochure may be standard, optional or not available depending on version. Manitou reserves the right to change the specifications shown and described at any time and without prior warning. The manufacturer is not liable for the specifications given. For more information, contact your Manitou dealer. Non-contractual document. Product descriptions may differ from actual products. List of specifications is not comprehensive. The logos and visual identity of the company are the property of Manitou and may not be used without authorisation. All rights reserved. The photos and diagrams contained in this brochure are provided for information only.

MANITOU BF SA - Limited company with board of directors - Share capital: 39,547,824 euros - 857 802 508 RCS Nantes