

# Range Masted Forklift Truck



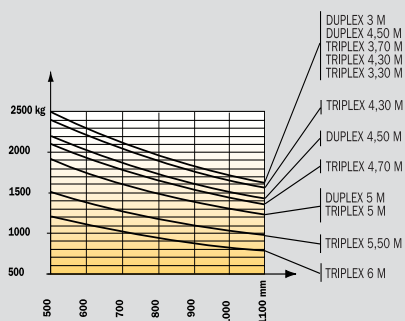




## MSI T/G Buggie *Evolution*

**2000 kg to 2500 kg**

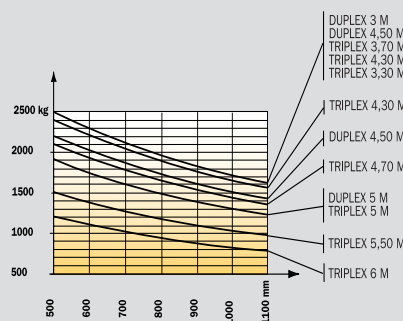
Diesel/Gas  
2 wheel drive  
Hydrostatic transmission



## MSI T MSI 35 T *Evolution*

**2000 kg to 3500 kg**

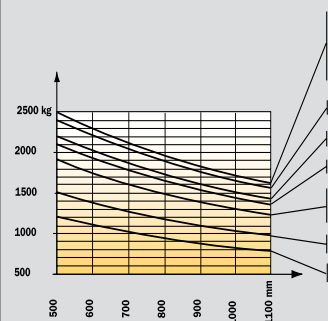
Diesel  
2 wheel drive  
Hydrostatic transmission



## MSI G

**2000 kg to 3000 kg**

Gas  
2 wheel drive  
Hydrostatic transmission

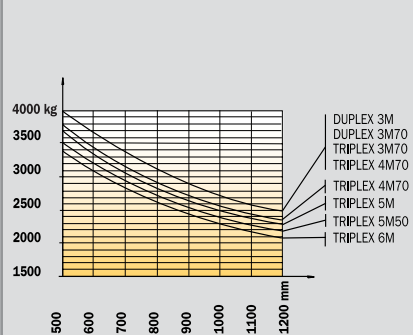


Model	MSI 20 T	MSI 25 T	MSI 20 G	MSI 25 G	MSI 20 T	MSI 25 T	MSI 30T	MSI 35 T	MSI 20 G	MSI 25 G	M
Capacity (kg)	2000	2500	2000	2500	2000	2500	3000	3500	2000	2500	M
Standard lifting height (m)	3.30				3.30				3.30		
Front tyres	275/70 R 22.5				275/70 R 22,5				275/70 R 22.5		
Rear tyres	7.00 x 12				7.00 x 12				7.00 x 12		
Engine	PERKINS 404 C 22T		TOYOTA 4Y		PERKINS 404 C 22T				TOYOTA 4Y		
Power	44.7 kw/60 HP		39 kw/53 HP		44.7 kw/60 HP				39 kw/53 HP		
Transmission	Hydrostatic				Hydrostatic				Hydrostatic		
Height (m)	1.99				2,31				2.31		
Width (m)	1.32				1.32				1.32		
Length to carriage	2.95	2.95	2.95	2.95	2.95	2.95	2.98	3.03	2.95	2.95	
Alley width (m)	4.49	4.49	4.49	4.49	4.49	4.49	4.53	4.59	4.49	4.49	
Out. turning radius (m)	2.55	2.55	2.55	2.55	2.55	2.55	2.59	2.59	2.55	2.55	
Weight unladen (kg)	3840	4150	3470	4045	3830	4150	4530	4980	3740	4045	

**MSI 40 H  
MSI 50 H**

**4000 kg to 5000 kg**

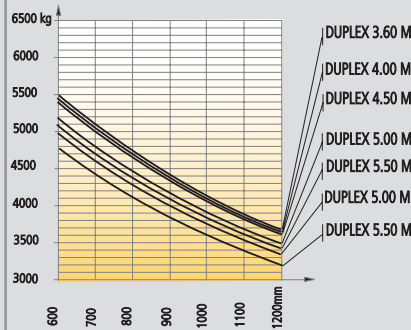
Diesel  
2 wheel drive  
Hydrostatic transmission



**MI 60 H  
MI 70 H**

**6000 kg to 7000 kg**

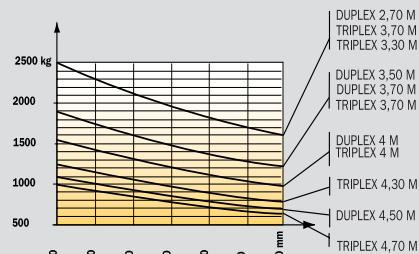
Diesel  
2 wheel drive  
Hydrostatic transmission



**MH 20 - 4 T  
MH 25 - 4 T**

**2000 kg to 2500 kg**

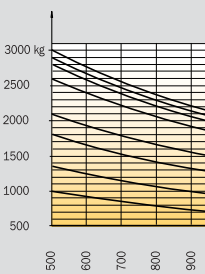
Diesel  
4 wheel drive  
Hydrostatic transmission



**MO**

**3000 kg**

Diesel  
2 wheel drive  
Torque converter



MSI 30 G	MSI 40 H	MSI 50 H	MI 60 H	MI 70 H	MH 20	MH 25	MO
3000	4000	5000	6000	7000	2000	2500	3000
	3.70		4.00		3.30		3.30
	315/70 R 22.5		355/65 R15		275/80 R20 XM 27 Tubeless		14.5 R 22.5
	225/75 R15 XZM		8.25 R15		27.10 - 12 IC 30		10 R 22.5
	PERKINS 1104 C 44		PERKINS 1104 C 44 T		PERKINS 404 C 22 T		PERKINS 1104 C 44
	61.5 kw/84 HP		74.5 kw/101 HP		44.7 kw/60 HP		61.5 kw/84 HP
	Hydrostatic		Hydrostatic		Hydrostatic		Torque converter
	2.78		3.39		1.99		2.78
	1.74		2.01		1.44		1.74
2,98	3.30	3.39	3.55	3.55	2.95		3.30
4.53	4.96	5.24	5.49	5.49	5.90		5.24
2.59	2.87	2.95	3.47	3.47	3.27		3.47
4425	7075	8200	9070	9750	4040	4340	5000

## 30

## MC 40 MC 50 Powershift

## MC 60 T MC 70 T Powershift

## M 26.2 M 30.2

0 kg

4000 kg to 5000 kg

6000 kg to 7000 kg

2600 kg to 3000 kg

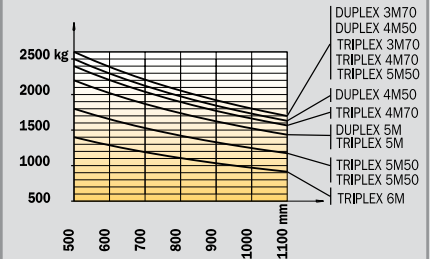
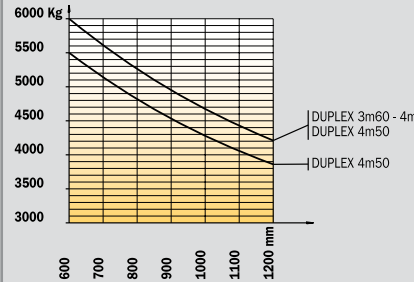
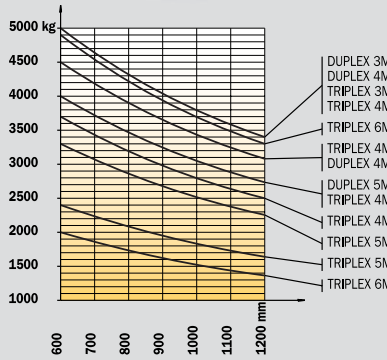
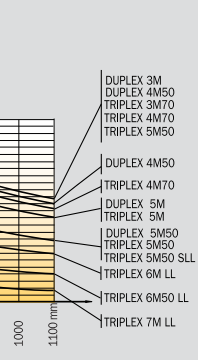
2600 kg

Diesel  
Electric drive  
Torque convertor

Diesel  
2 wheel drive  
Torque convertor

Diesel  
2 wheel drive  
Torque convertor

Diesel  
2 wheel drive  
Torque convertor



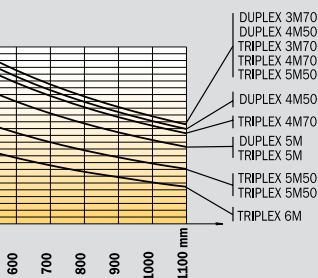
30	MC 40 Powershift	MC 50 Powershift	MC 60 T Powershift	MC 70 T Powershift	M 26.2	M 30.2	M
4000	4000	5000	6000	7000	2600	3000	
3.70	3.70		4.00		3.70		
18 R 19.5	445/65 R19,5 Tubeless XZY		18 R 19.5 XF Tubeless (445/65 19.5)		16.5/85-24 SGI 8 PR		
10 R 17.5	10 R 17.5		9.5 R 19.5 Tubeless XZY		9.00 16 EM5 10 PR	10 R 17.5 XZT	
PERKINS 1104 C 44	PERKINS 1104 C 44		PERKINS 1004.4 Turbo		PERKINS 1104 C 44		
61.5 kw/84 HP	61.5 kw/84 HP		78.5 kw/106.5 HP		61.5 kw/84 HP		
Powershift	Powershift		Powershift		Torque convertor		
2.86	2.86		3.41		2.79		
2.04	2.04		2.15		2.11		
3.74	3.74	3.75	3.96	4.16	3.63		
5.56	5.56	5.57	6.50	6.71	6.14		
3.39	3.39	3.39	4.00	4.21	3.93		
6535	6535	7495	9055	9700	5800	6100	

# ROUGH TERRAIN FORKLIFT

**M 26.4**  
**M 30.4**

**2600 kg to 3000 kg**

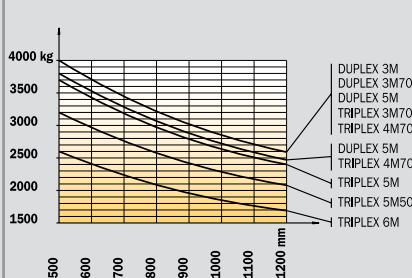
Diesel  
4 wheel drive  
Torque convertor



**M 40.4**  
**M 50.4**

**4000 kg to 5000 kg**

Diesel  
4 wheel drive  
Torque convertor

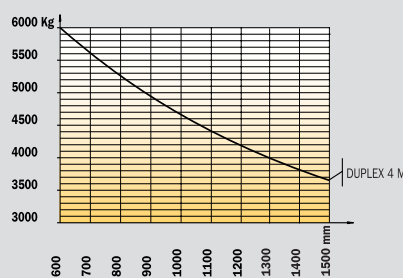


**MA 460**  
**MA 470**

**Articulated**

**6000 kg to 7000 kg**

Diesel  
4 wheel drive  
Hydrostatic transmission



M 26.4	M 30.4	M 40.4	M 50.4	MA 460	MA 470	Model
2600	3000	4000	5000	6000	7000	Capacity (kg)
3.70		3.70		4.00		Standard lifting height (m)
16.5/85-24 SGI		445/65-22.5		18 x 22.5 XF		Front tyres
10.5/80 R 18		12,5/80 R 18		18 x 22.5 XF		Rear tyres
PERKINS 1104 C 44		PERKINS 1104 C 44		PERKINS 1004.4 Turbo		Engine
61.5 kw/84 HP		61.5 kw/84 HP		78.5 kw/106.5 HP		Power
Torque convertor		Torque convertor		Hydrostatic		Transmission
2.79		2.91		3.41		Height (m)
2.11		2.07		2.18		Width (m)
3.63		3.74	3.75	4.52		Length to carriage
6.30		6.52	6.53	7.30		Alley width (m)
4.10		4.36	4.36	4.99		Out. turning radius (m)
5880	6180	6700	7660	9200	9670	Weight unladen (kg)

# Manitou, material handling world leader

Inventor of the rough terrain forklift truck, Manitou offers today the most comprehensive range to meet all specific handling and personal lifting requirements :



Telescopic trucks

**MANISCOPIC**

Rough terrain and semi industrial masted trucks

**MANITOU**



Access equipment

**MANIACCESS**

Compact telescopic handler

**Twisco**



Truck mounted forklifts

**MANITRANSIT**

Backhoe/Loader with telescopic boom

**MANIHOE**

Swinging arm and articulated wheeled loaders

**MANILOADER**

Electric pallet trucks and electric stackers

**MANILEC**



This publication in no way constitutes an offer and the company reserves the right to alter specification without prior notice. The MANITOU models presented in this brochure can be supplied complete with optional equipment attachments.

## A network of skilled professionals at your service

With a network of 500 service and parts centres in more than 100 countries, Manitou provides an efficient after-sales support based on the expertise of 2000 factory trained technicians.

**MANITOU BF SA**

B.P. 249 - 44158 Ancenis Cedex - France  
Tél. : 33 2 40 09 10 11 / Export Department Fax : 33 2 40 09 10 97  
www.manitou.com

700335EN

